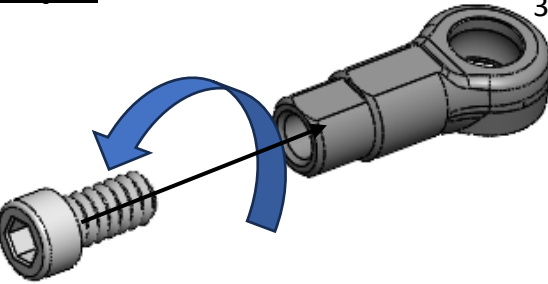


Step 01 (open Bag 01)

Build 2 pcs

3.0 Ball Cap

Reverse Thread
Cup Head M2 screw

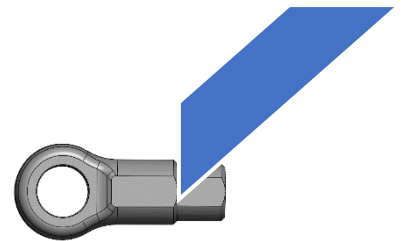


Use the **Reverse** thread M2 screw as a tool to make a reverse thread on the ball cap.

1. *turn the screw anti-clockwise*
2. *fully tighten the screw*
3. *then remove the screw*

Step 02

Hobby Knife

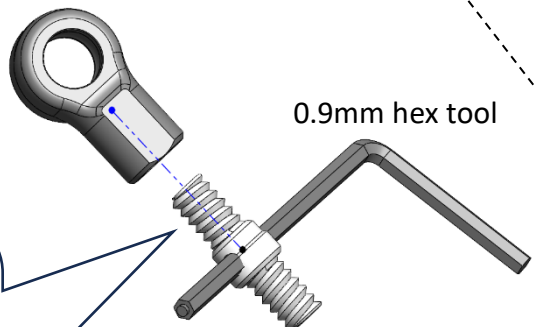


Trim the first segment of the ball cap

Step 03

Reverse Thread side

Normal Thread side

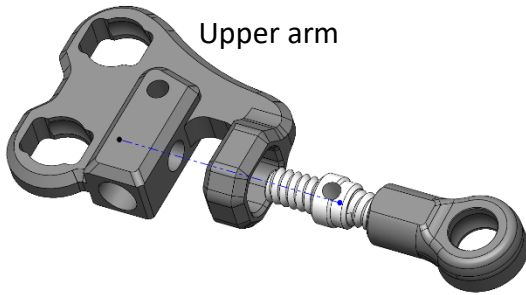


0.9mm hex tool

Screw the turnbuckle to the ball cap using **Reverse Thread** side.

Leave around 1.5mm gap

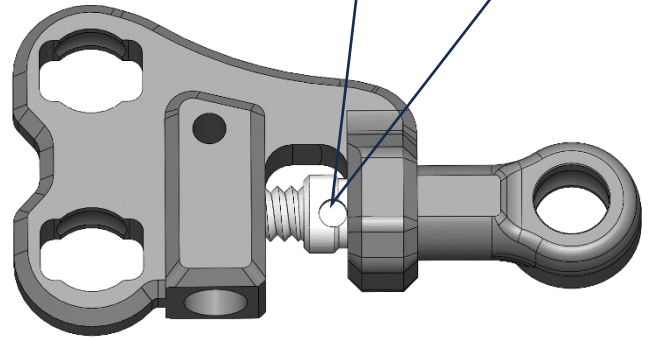
Step 04



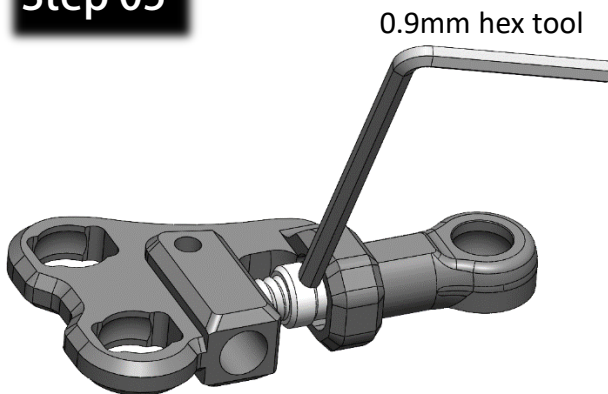
Upper arm

Screw the turnbuckle to the upper arm. (Normal thread side)

Screw the turnbuckle until we can see the hole.



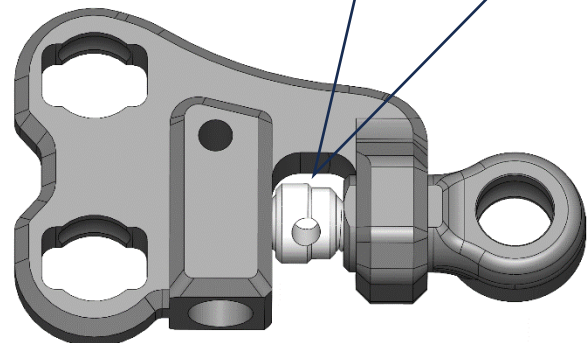
Step 05



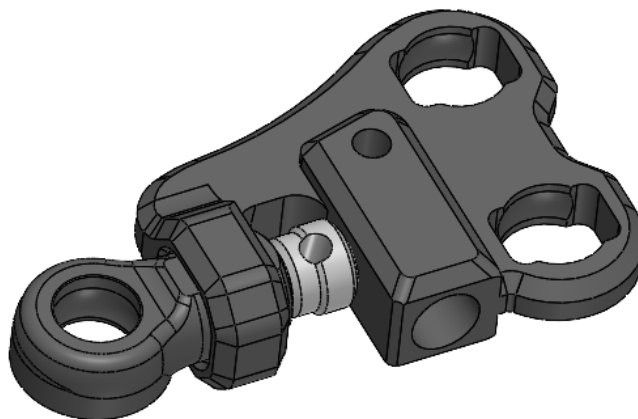
0.9mm hex tool

Use the 0.9mm hex tool to screw the turnbuckle.

Fully screw the turnbuckle to the upper arm. (we will adjust the camber angle later)

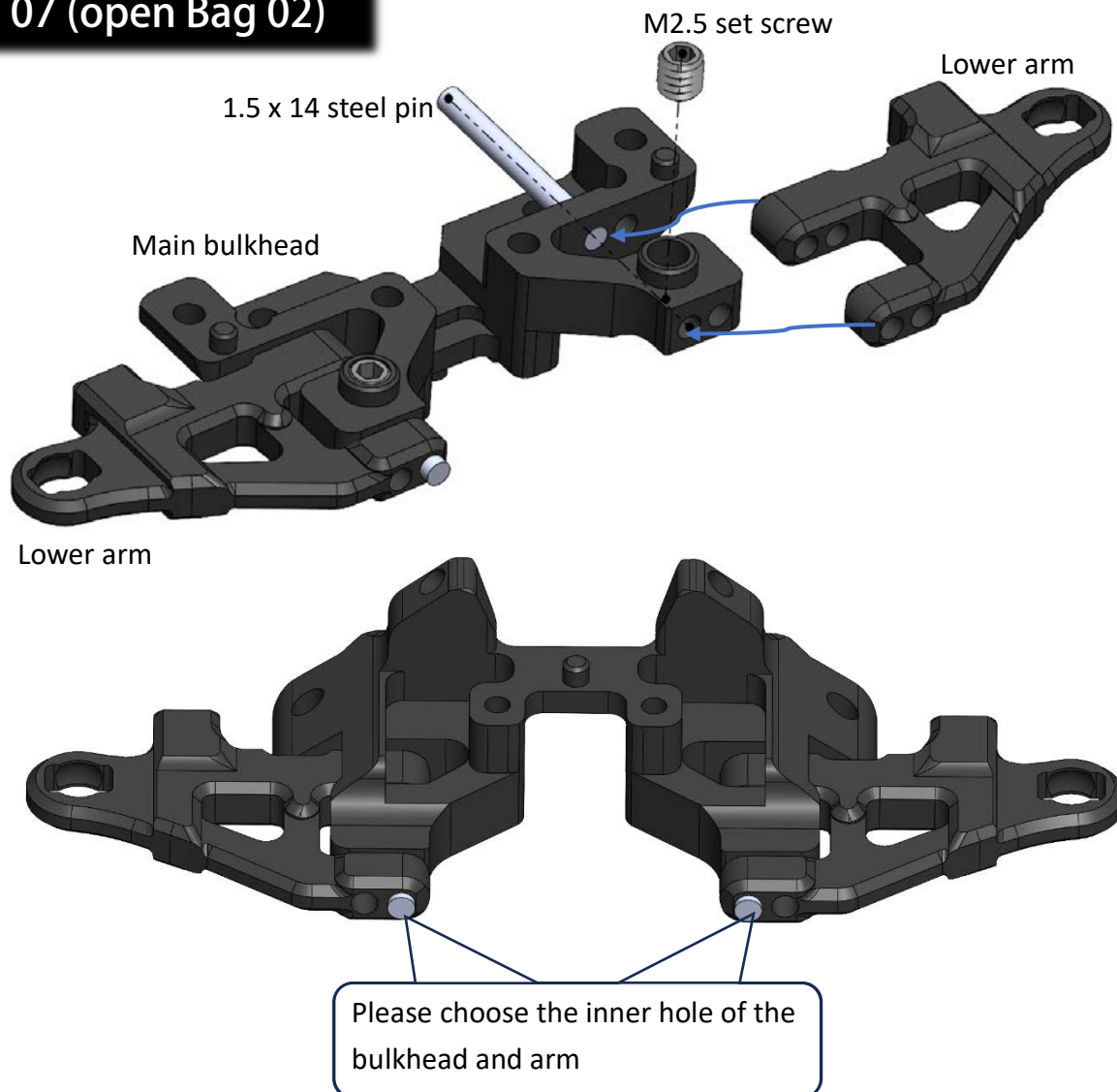


Step 06

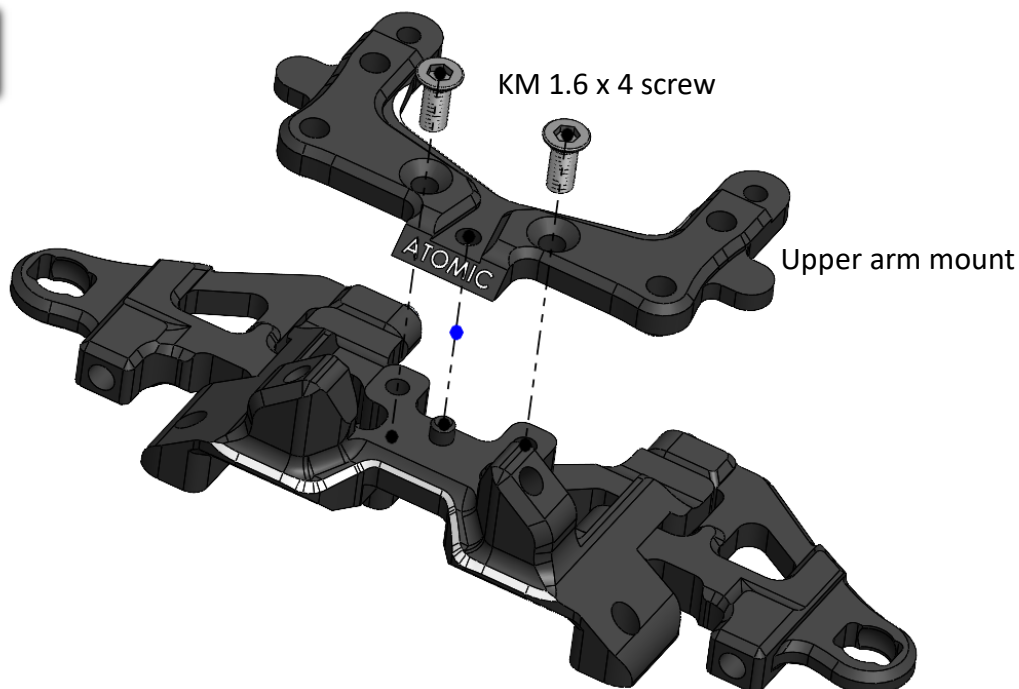


Repeat above steps to build the "Right" arm

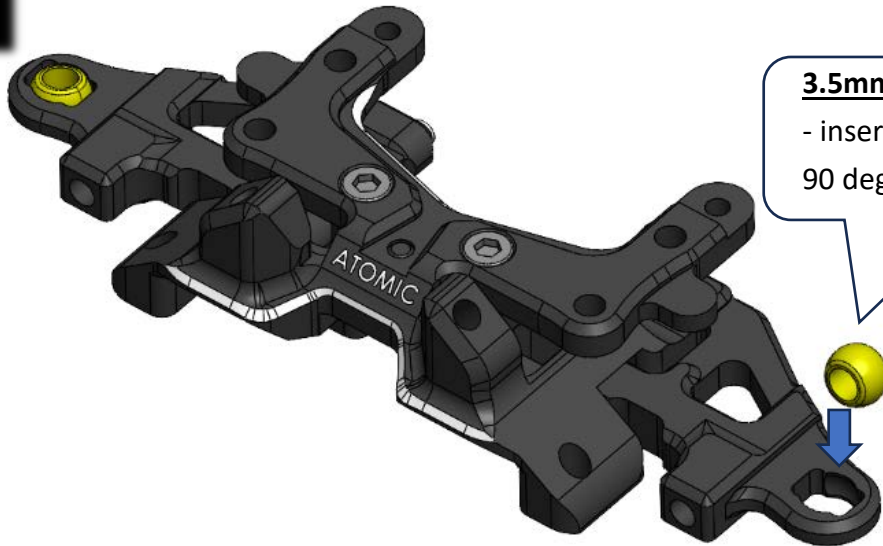
Step 07 (open Bag 02)



Step 08

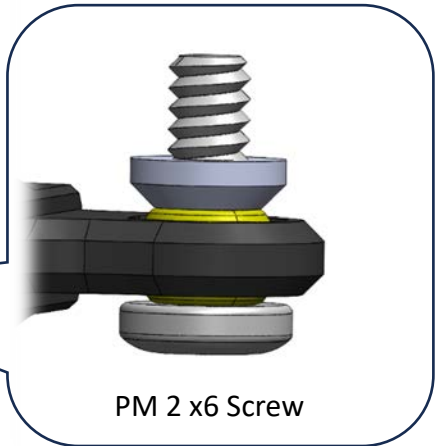
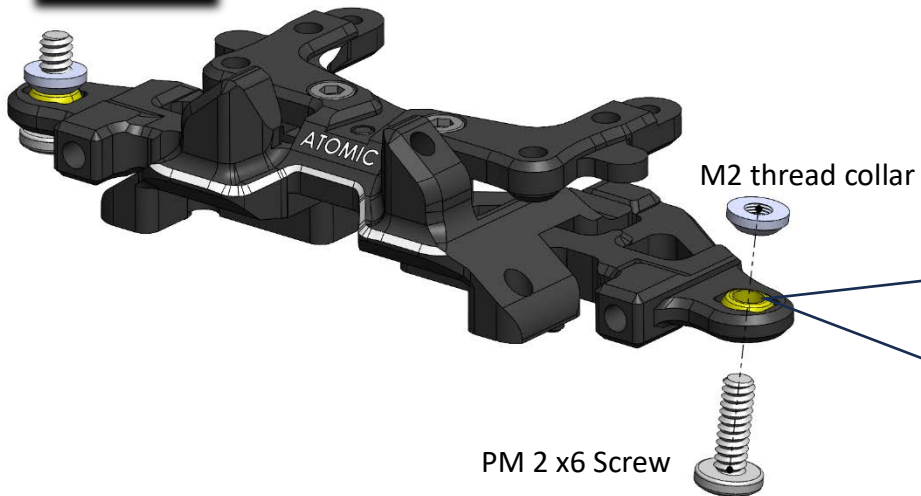


Step 09



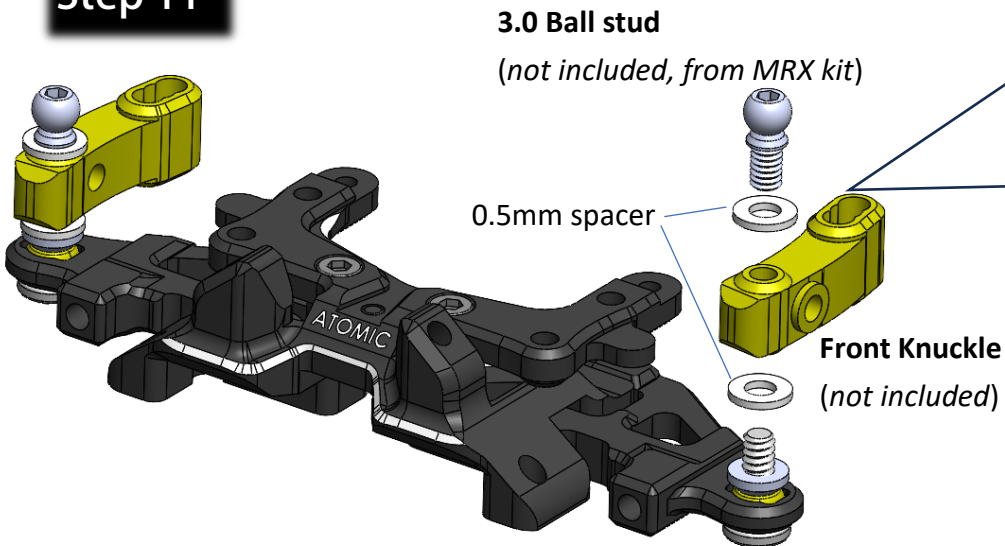
3.5mm pivot ball
- insert it vertically and then turn 90 degree to lock it in place.

Step 10



PM 2 x6 Screw

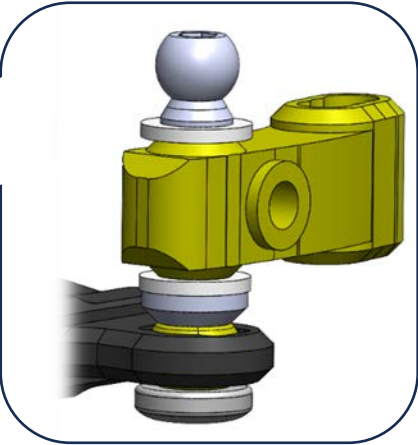
Step 11



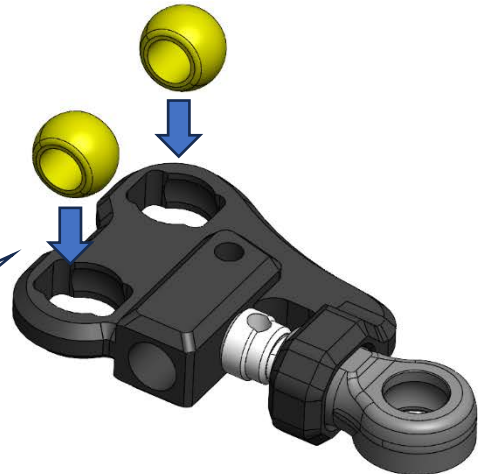
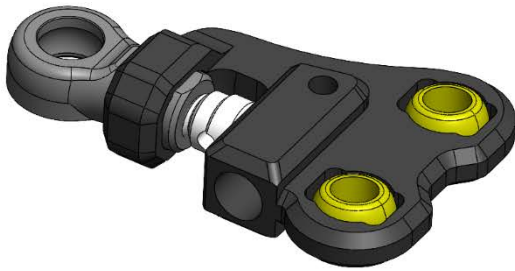
3.0 Ball stud
(not included, from MRX kit)

0.5mm spacer

Front Knuckle
(not included)



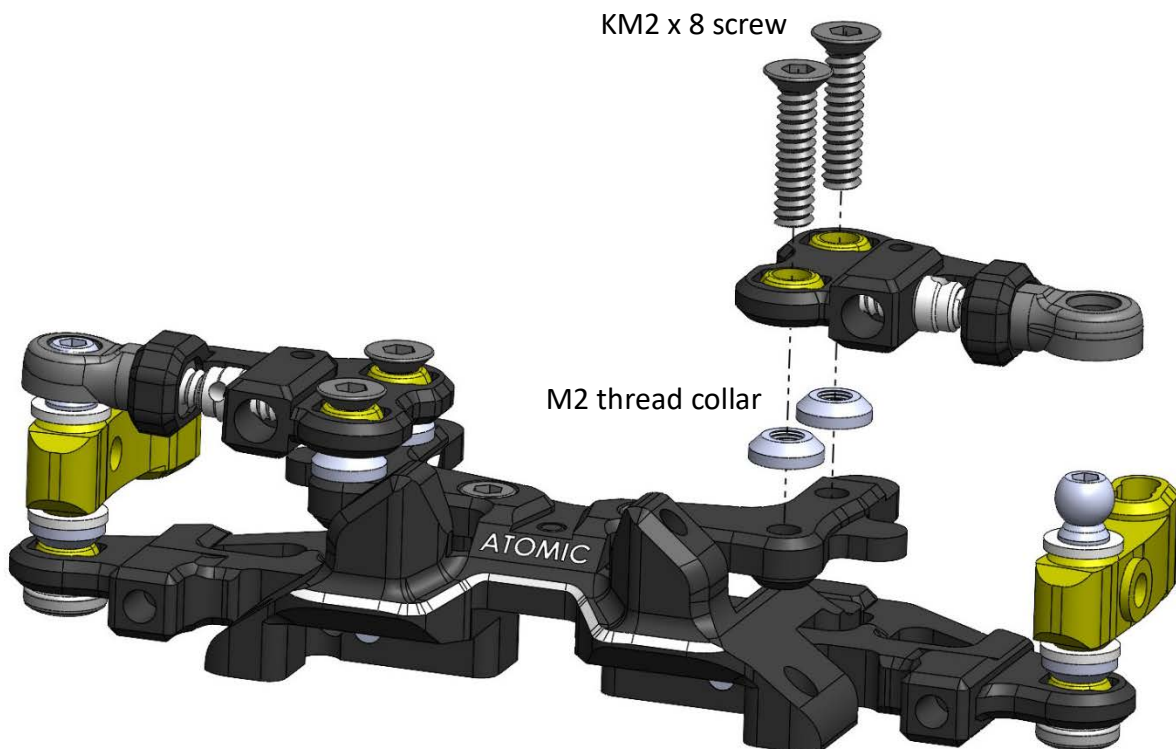
Step 12



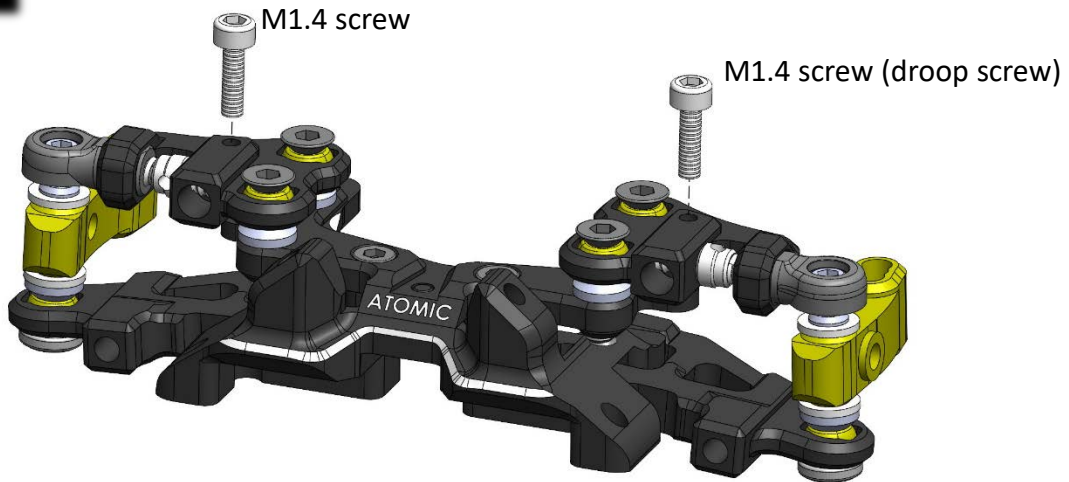
3.5mm pivot ball

- insert it vertically and then turn 90 degree to lock it in place.

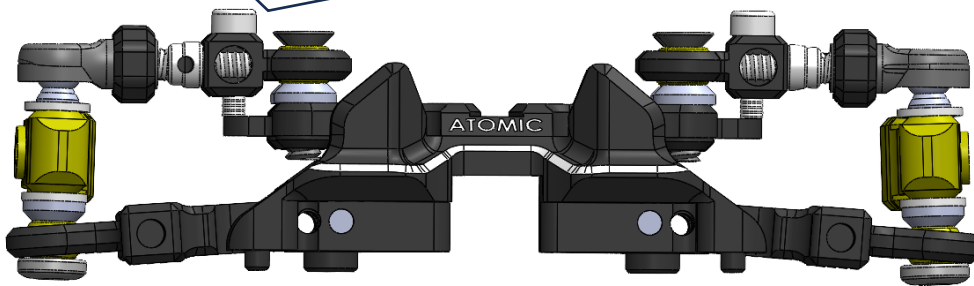
Step 13



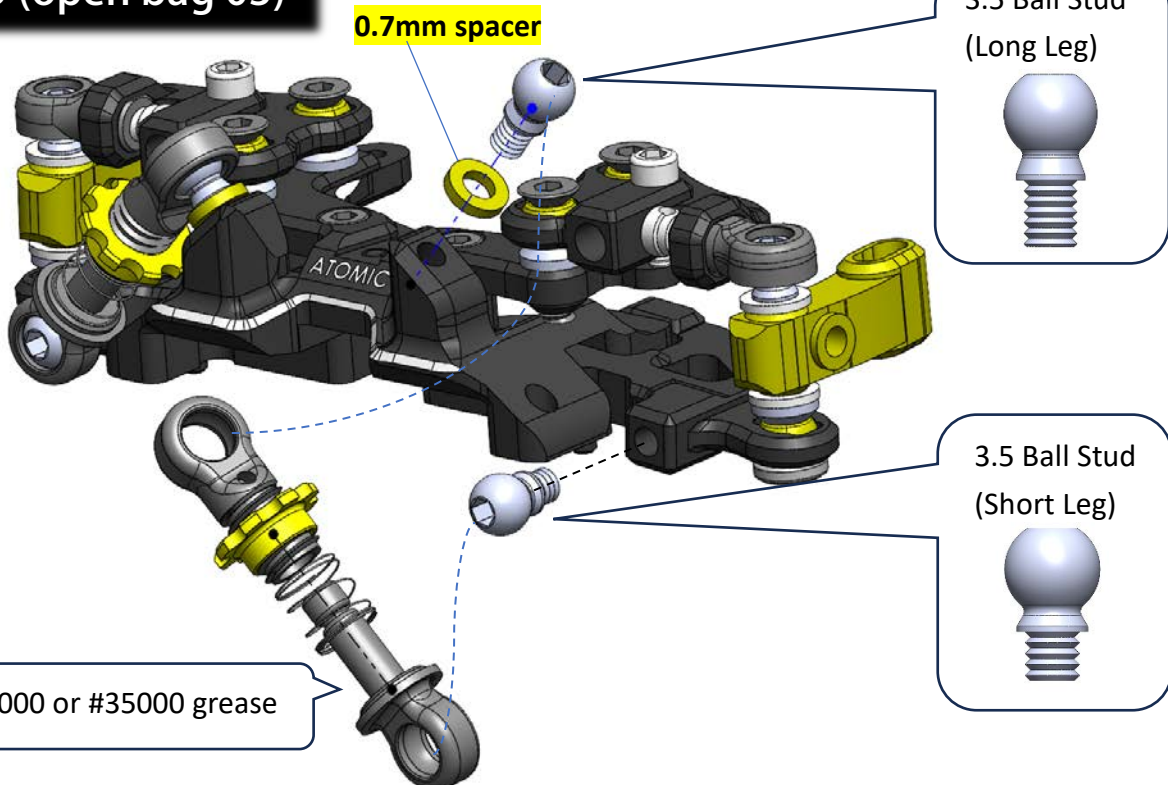
Step 14



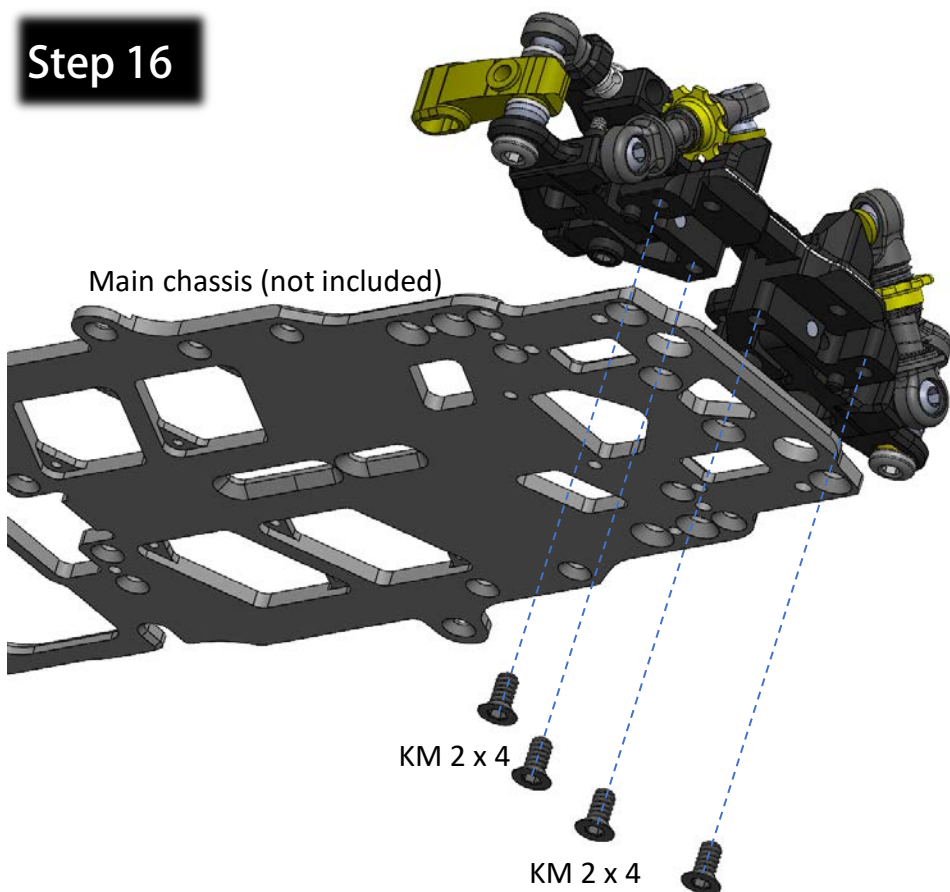
Recommend adjusting the upper arm to horizontal for initial setup



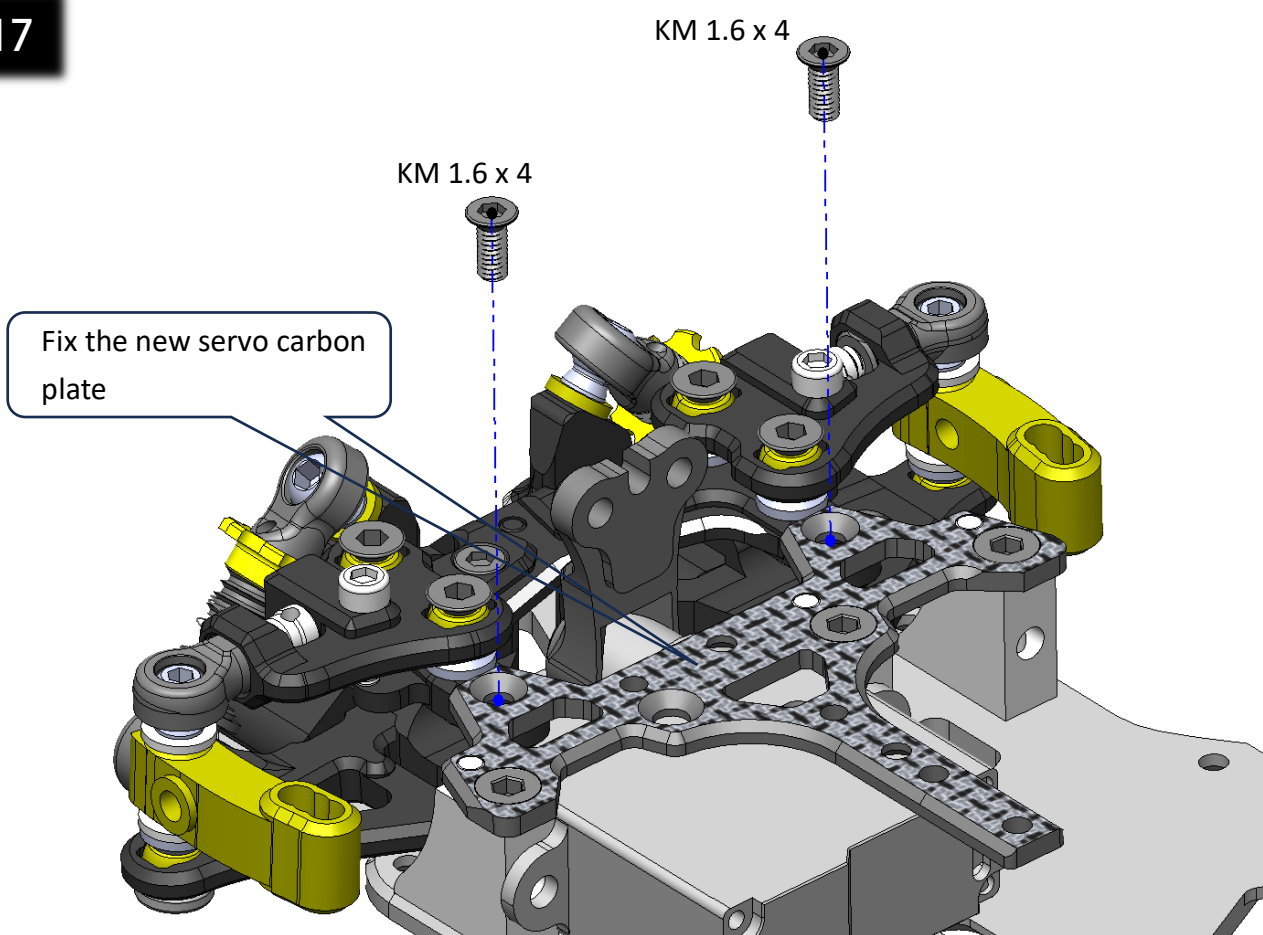
Step 15 (open bag 03)



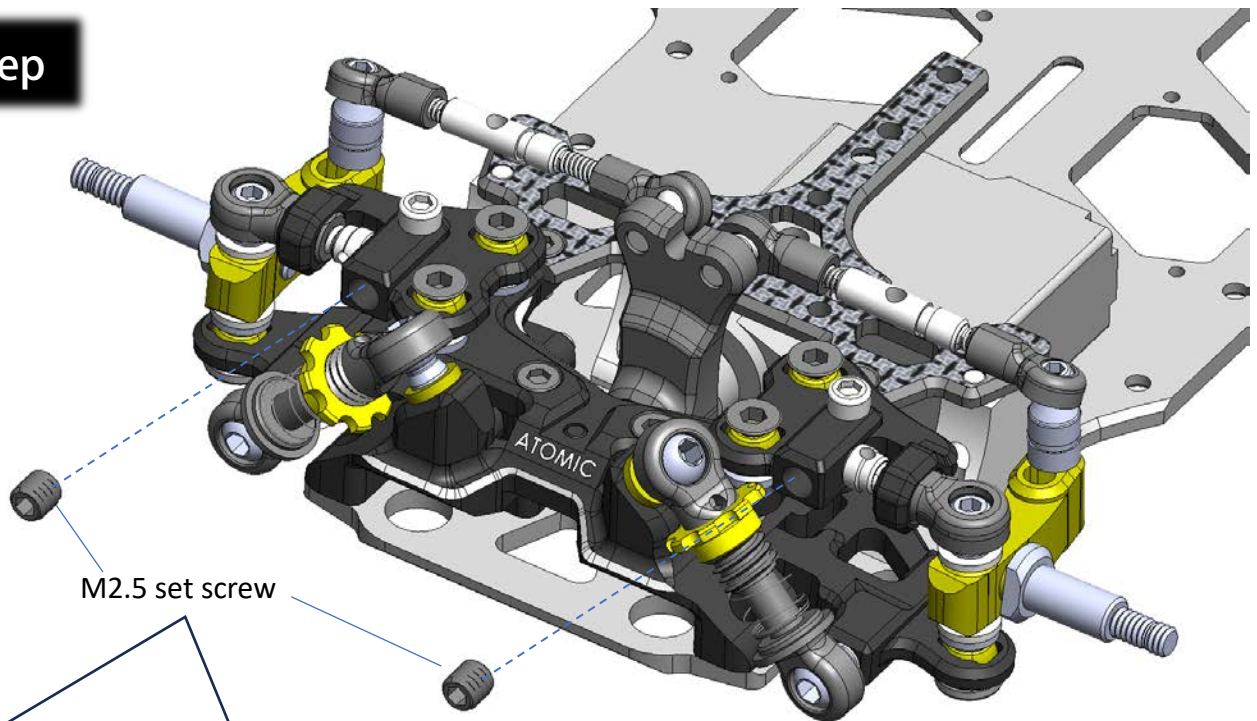
Step 16



Step 17



Last step



M2.5 set screw

Install everything back and fix this M2.5 set screw to prevent wobble of the turnbuckle, after setting the desired camber angle. (recommend starting with 1.0 or 1.5 degree)