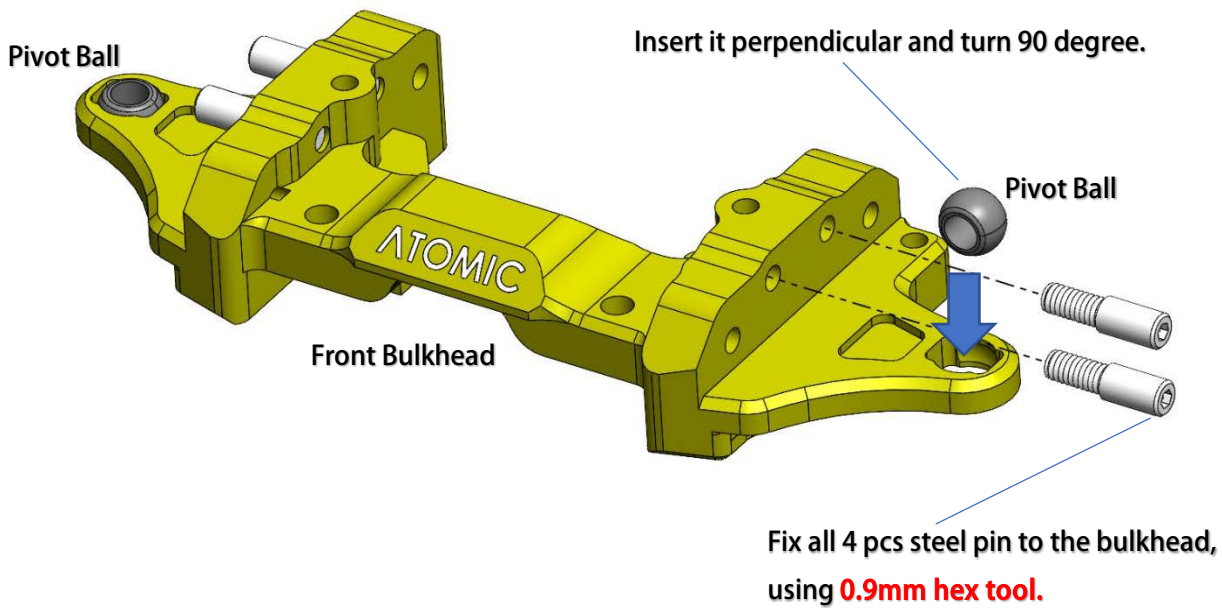
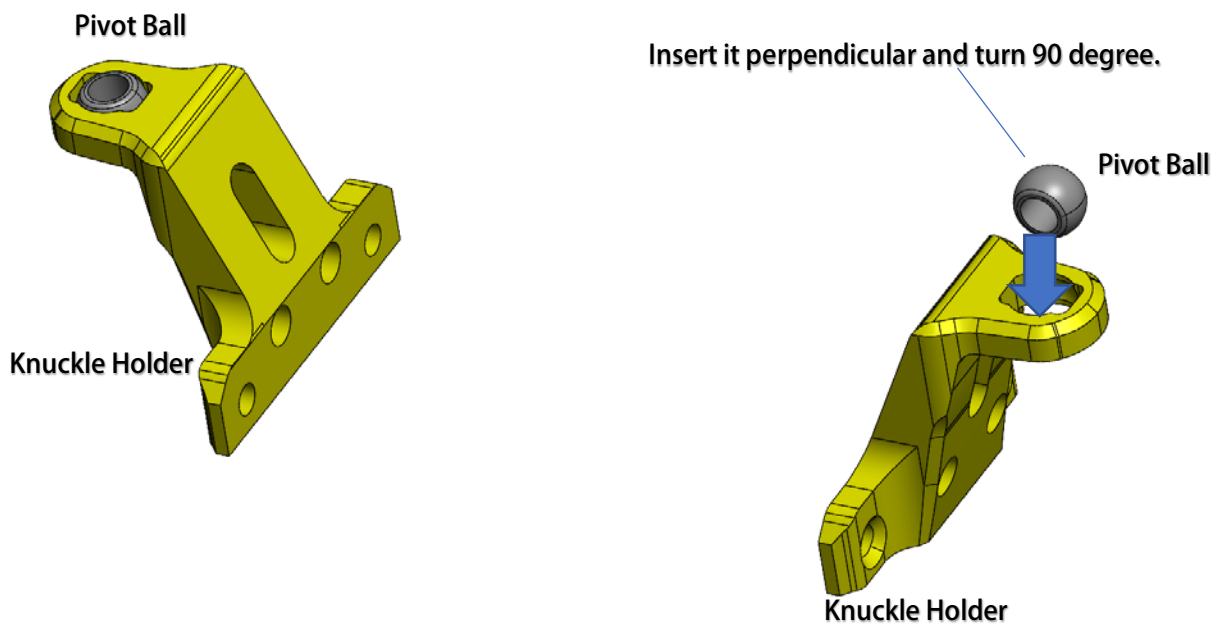


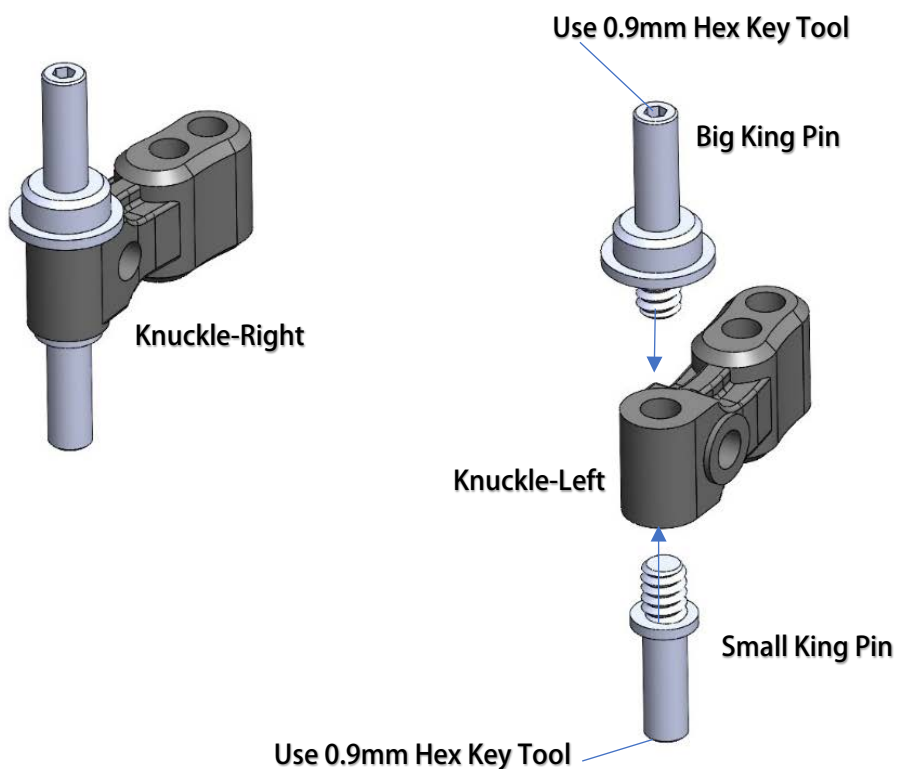
Step 01 – Pivot Balls and Steel Pins



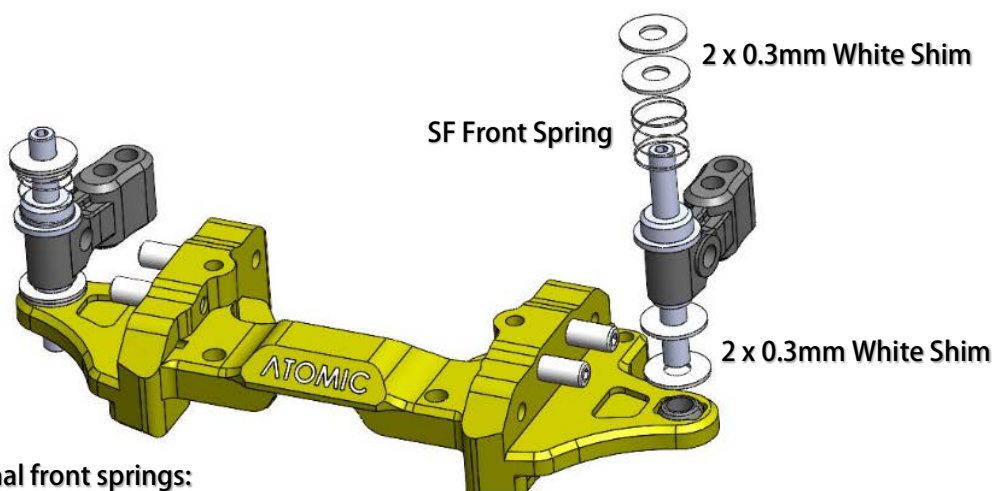
Step 02 – Pivot Balls to Knuckle Holder



Step 03 – King Pin and Knuckle



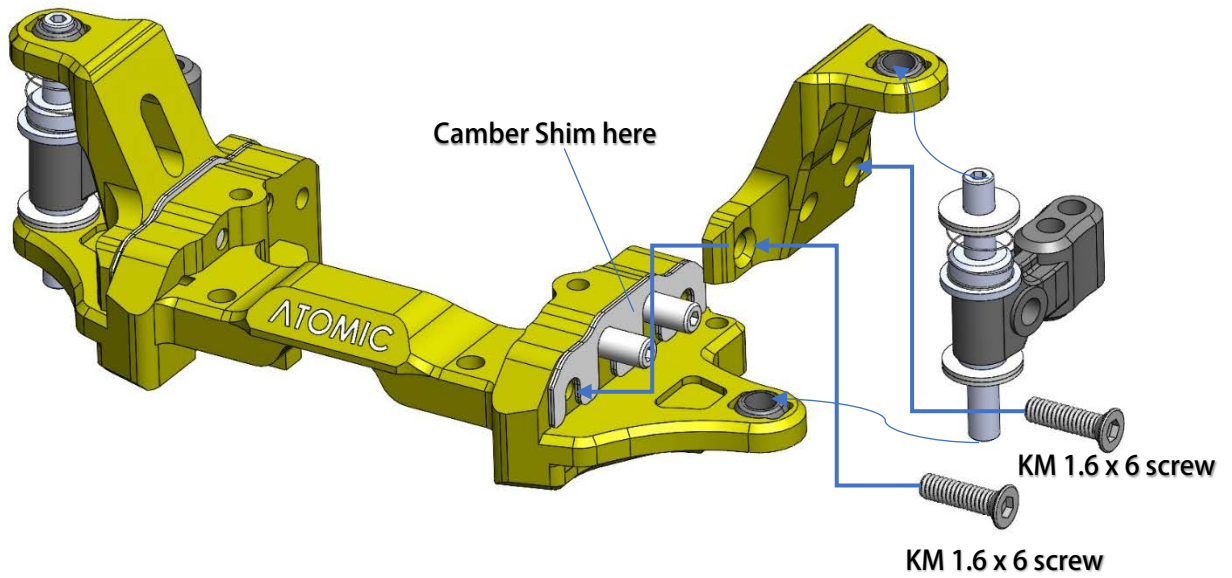
Step 04 – Spring and Spacer



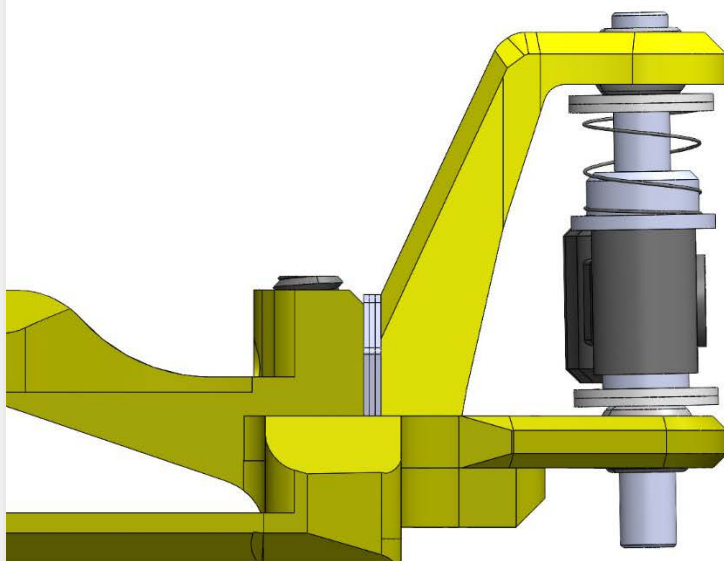
SKU for the optional front springs:

- MRZSF-08H
- MRZSF-08M
- MRZSF-08S

Step 05 – Camber Shim



Step 06 – Camber Angle

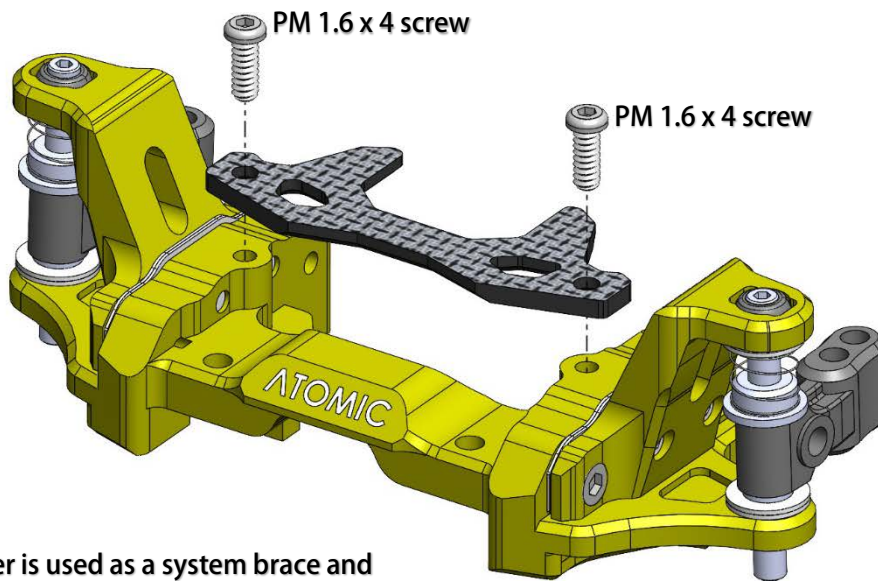


Camber Shims for Camber Angle Adjustment:

- 3 x 0.2mm shim = 1.0 degree
- 2 x 0.2mm shim = 1.5 degree
- 1 x 0.2mm shim = 2.0 degree
- 0 x 0.2mm shim = 2.5 degree

Generally, more camber will result in more steering, we recommend starting at 1.5 degree.

Step 07 – Front Carbon Cover



The carbon cover is used as a system brace and steering travel limiter.